

AN ISO 9001, OHSAS 18001, 14001 COMPANY



IS 1786:08  
IS 2830:12  
IS 432 G.1  
IS 7887:1992

# JYOTI

— BHAROSE KI TAAKAT —

## TEMPCORE SG

TMT BAR

Build Your

# DREAM HOME

With

JYOTI TEMPCORE SG TMT BAR





## MADHAV KRG GROUP OVERVIEW



**2000+**  
No of Employees



**15 Lacs MT**  
Production Capacity of Steel



**10+ States**  
Distribution Network



**1000+**  
No. of Dealers

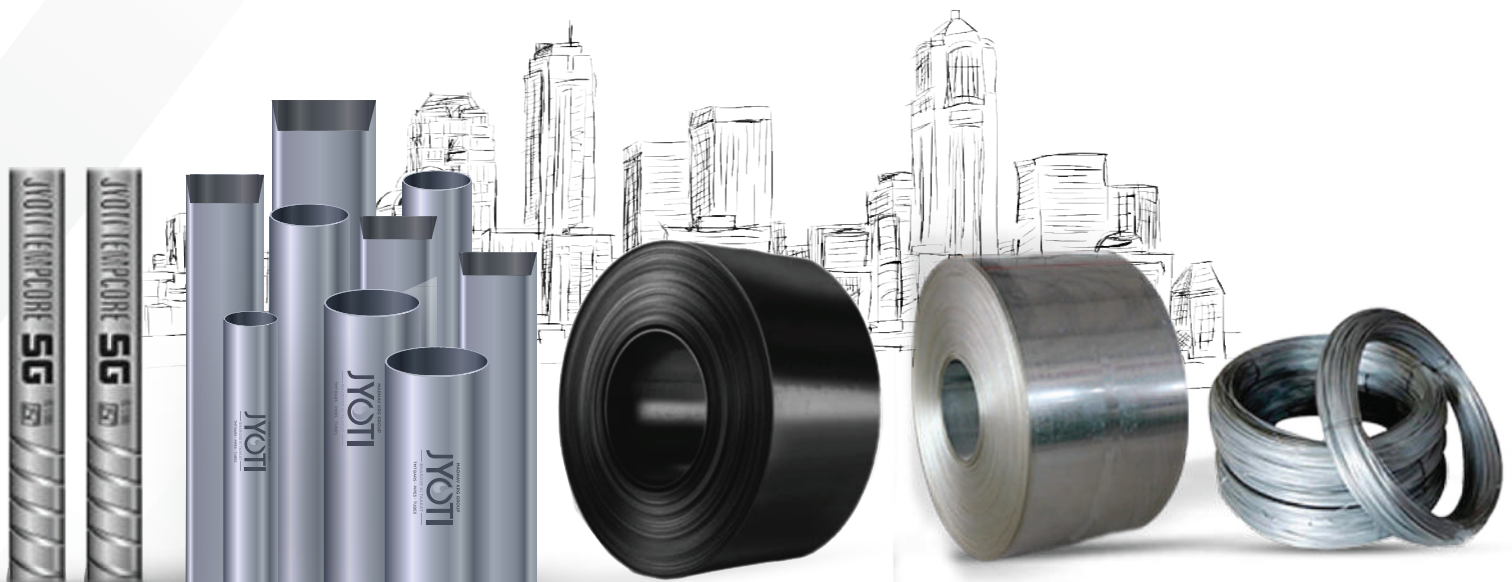


**27+**  
Years of Steel Business



**100000+**  
Lives through CSR

## PRODUCT RANGE



**TMT Bars | Pipes | Tubes | HR Coils | GP Coils | Binding Wires**



## THE BRAND JYOTI - BHAROSE KI TAKAAT



Delivering the promises to the customers & Business Associates has always been our tradition. Today our flagship Brand **JYOTI** stands tall only because of the reason that our Trust is visible and we fully deliver what is expected from us. It certainly is a matter of pride for us.

## JYOTI TEMPCORE SG REBARS

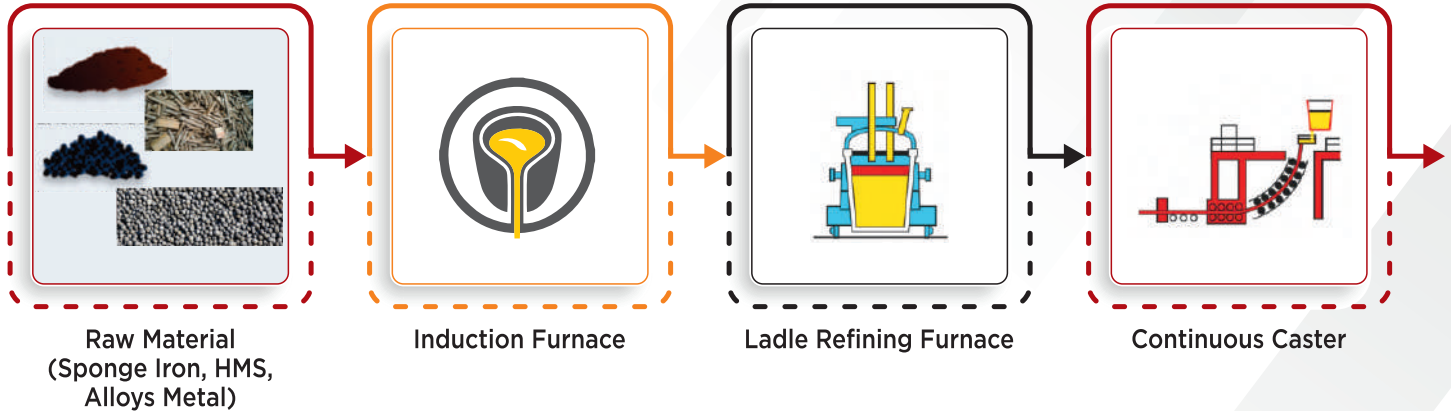


JYOTI Tempcore SG Rebars are the main line of our operations. 'Billets' of international standards are created by employing advanced technology in an INTEGRATED STEEL PLANT. Billets are further used in the production of the Thermo Mechanically Treated (TMT) Bars. Hence, self-manufactured raw materials contribute to economical production and are is advantageous for the end user.

The resultant Bars, with their malleability, ductility and HCR (High Corrosion Resistance) help in consistently maintaining our grades of the outcome and ensures customers' satisfaction along with the desired quality.

Today JYOTI Tempcore SG Rebars have a large scale presence across various corners on the country and continuously the spread is growing exponentially. This has been possible because of the wide product acceptability and a lead in repeat purchases. Withstanding the challenges in the Steel arena, JYOTI Tempcore SG Rebars have always stood prime in Quality and deliverance.

# MANUFACTURING PROCESS



**PLEASE SCAN FOR THE VIDEO OF  
OUR MANUFACTURING PROCESS**

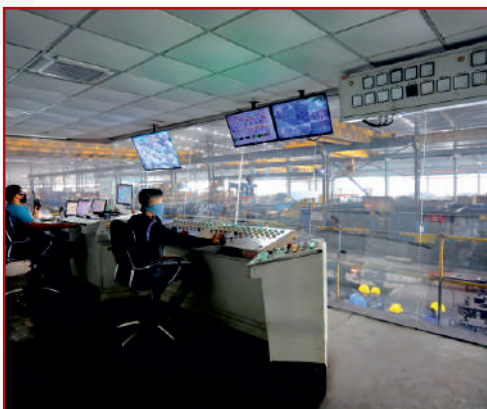


## IQMS

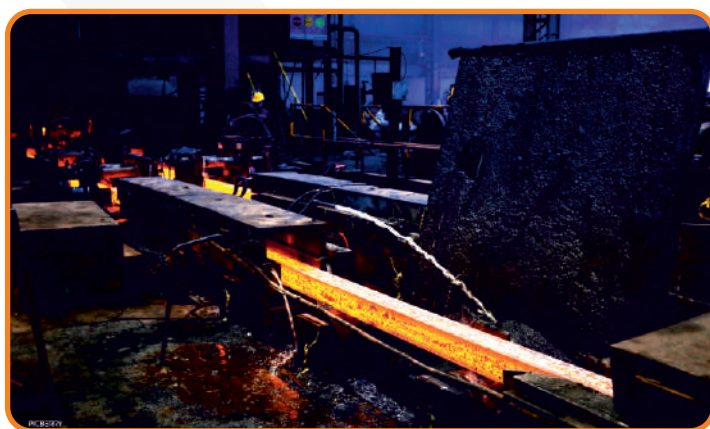
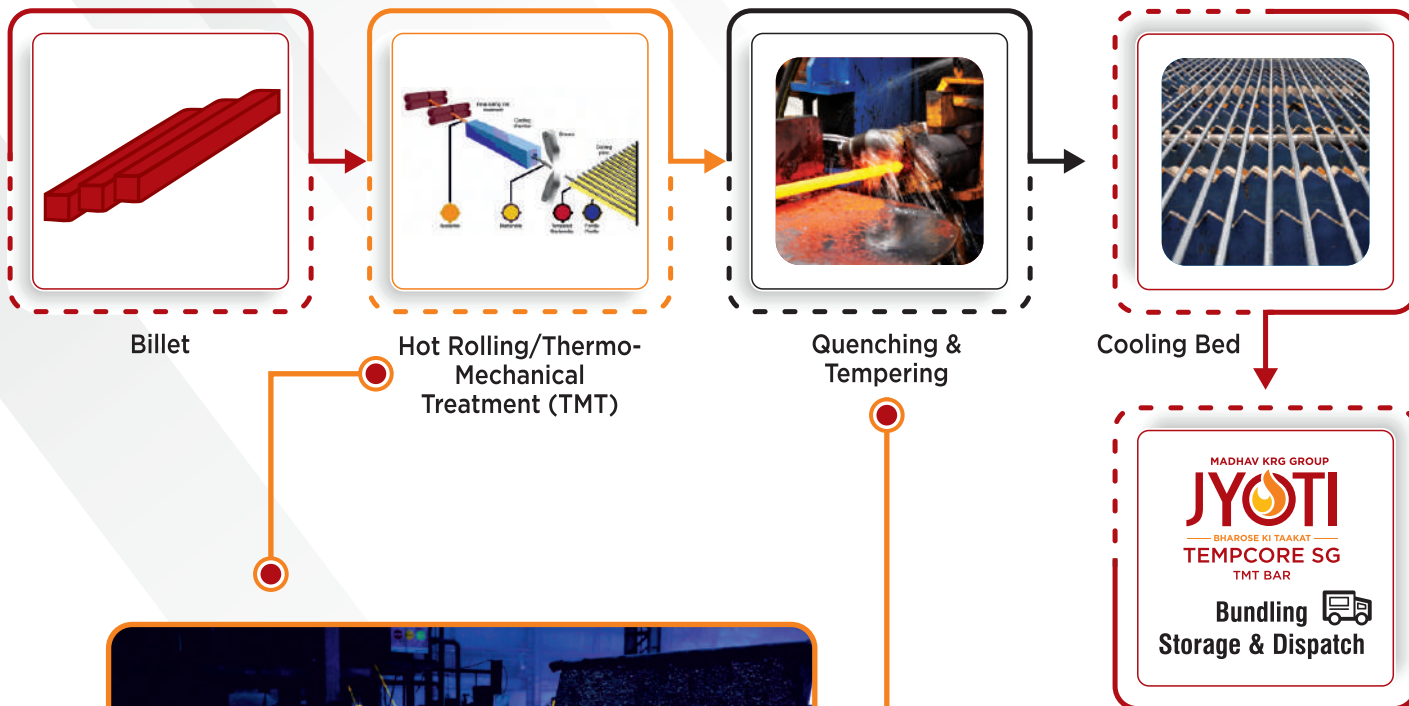
**Quality is always our prime concern when it comes to delivering products; this is why we have established an IQMS in our company.**

The IQMS in our company is responsible for the fulfillment of two converging goals - firstly, ensuring the quality of finished products, and secondly, enabling compliance with set standards in all the processes of manufacturing, from acquiring raw materials to delivering the finished product.

This advanced system guides us to adhere to the highest standards of quality in all aspects of manufacturing and helps us keep our processes optimized.







## Quenching, Self-Tempering & Atmospheric Cooling

Processes ensure that the final structure of rebar consists of an optimum combination of a strong outer layer (Tempered Martensite) with a ductile core (ferrite-pearlite). This gives **Jyoti Tempcore SG Bars** its unique combination of higher strength and ductility.

## TESTING



Universal testing machine



SpectroTesting



Chemical Testing

# BENEFITS OF JYOTI TEMPCORE SG BARS



## SUPER STRENGTH

- ◆ More than 550N/MM<sup>2</sup>Ys – BIS 1786:2008
- ◆ Thermo Mechanically Treated bars
- ◆ Perfect for sudden load absorption for any structural building

1



## SUPER RIB AREA

- ◆ Double as per BIS – 1786:2008
- ◆ Maximum bonding of concrete with the steel bar for long-lasting strength
- ◆ Ribs ensure better grip in concrete. It reduces the possibility of slipping during construction

2



## SUPER CORROSION RESISTANCE

- ◆ Best control on chemistry of liquid Iron
- ◆ Longer life due to superior pitting corrosion resistance

3



## SUPER DUCTILE

- ◆ Minimum 18% elongation
- ◆ TMT Bar can bend and re-bend as per BIS 1786:2008
- ◆ Earth quake resistance

4



## SUPER FINE QUALITY

- ◆ TMT with Zero impurities & absolute removal of harmful gasses
- ◆ Tested Raw Material as Per IQMS (Integrated Quality Management System)

5



## LRF (LADLE REFINING FURNACE)

- ◆ Jyoti TMT bars are manufactured by world renowned latest technology brought to North India 1st time by Madhav KRG Ltd.

6



## CRM BELGIUM CERTIFIED

- ◆ Jyoti Tempcore SG TMT is produced by World acclaimed Tempcore Technology duly certified by CRM Belgium

7





# TECHNICAL SPECIFICATIONS

## PRODUCT SPECIFICATIONS

| TRADE MARK                            | GRADES   | DIAMETER                                       |
|---------------------------------------|--|--|
| Jyoti Tempcore SG <sup>1786</sup> ISI | Jyoti Tempcore -<br>Fe 500, Fe 550, Fe 500D, Fe 550D | 6, 8, 10, 12, 16, 20,<br>25, 28, 32, 36, 40 mm |

## PHYSICAL PROPERTIES

| SIZE  | JYOTI SG STANDARD   | I.S.I STANDARD      |
|-------|---------------------|---------------------|
| 6 MM  | 206 to 238 gm/mtr   | 204 to 240 gm/mtr   |
| 8 MM  | 380 to 400 gm/mtr   | 367 to 422 gm/mtr   |
| 10 MM | 580 to 605 gm/mtr   | 574 to 660 gm/mtr   |
| 12 MM | 850 to 880 gm/mtr   | 844 to 932 gm/mtr   |
| 16 MM | 1530 to 1595 gm/mtr | 1501 to 1657 gm/mtr |
| 20 MM | 2410 to 2490 gm/mtr | 2394 to 2544 gm/mtr |
| 25 MM | 3800 to 3899 gm/mtr | 3735 to 3965 gm/mtr |

## CHEMICAL PROPERTIES

|                                   |                                      |
|-----------------------------------|--------------------------------------|
| <b>CARBON</b> 0.18 to 0.25 max    | <b>SULPHUR</b> 0.030 to 0.045 max    |
| <b>MANGANESE</b> 0.45 to 0.70 max | <b>PHOSPHORUS</b> 0.030 to 0.045 max |

## MECHANICAL PROPERTIES

| PARAMETER        | JYOTI TEMPCORE SG REBAR |                       |                       |                       |
|------------------|-------------------------|-----------------------|-----------------------|-----------------------|
|                  | Fe 500                  | Fe 500 D              | Fe 550                | Fe 550 D              |
| Yield Strength   | 525 N/mm <sup>2</sup>   | 525 N/mm <sup>2</sup> | 575 N/mm <sup>2</sup> | 575 N/mm <sup>2</sup> |
| Tensile Strength | 600 N/mm <sup>2</sup>   | 600 N/mm <sup>2</sup> | 660 N/mm <sup>2</sup> | 660 N/mm <sup>2</sup> |
| Elongation       | 18%                     | 18%                   | 18%                   | 18%                   |

North **INDIA'S 1<sup>st</sup>** LRF Technology TMT Rebar



# CERTIFICATIONS

**भारतीय मानक ब्यूरो**  
Bureau of Indian Standards  
The National Standards Body of India

For any other communication:  
Chandigarh Branch Office (Flat No. 4-A, Sector 27-B, Madhya Marg, Chandigarh, CHANDIGARH/CHANDIGARH/160019)  
Phone: 0172 2602490, 2602496  
Fax: 0172 2610358  
E-Mail: info@bis.gov.in  
Web: www.bis.org.in, www.bisindia.nic.in

**BUREAU OF INDIAN STANDARDS**  
Attachment to License No. CML-460073

| CML No. | Name of the Licensee with the Factory Address                                  | Name of the Product  | Indian Standard No. |
|---------|--|--|---------------------|
| 1660372 | Mathur KRI Limited<br>Vill. Anagarth, Arunthi Block,<br>Road, Pincode : 147201 | High strength deformed steel bars and wires for concrete reinforcement | IS 1786:2008        |

Endorsement No. 18 Dated 17-Mar-2022

Whereas, the license was valid upto First May Two Thousand Twenty Two.  
Now, consequent upon renewal, the validity of the license given is schedule of the license dated 16-Apr-2022 has been extended from First May Two Thousand Twenty Two to Forty April Two Thousand Twenty Three.

Other terms and conditions of license remain same.

Branch Head (Chandigarh Branch Office)

Manoj Bhawan, 9 Bahadur Shah Zafar Marg, New Delhi 110002, 9 Bahadur Shah Zafar Marg, DELHI 110002  
Contact No: +91 11 23224131, 22233375 Fax: +91 11 23214062, 232 Email: info@bis.gov.in, 23239402

IS 1786:2008

**भारतीय मानक ब्यूरो**  
Bureau of Indian Standards  
The National Standards Body of India

For any other communication:  
Chandigarh Branch Office (Flat No. 4-A, Sector 27-B, Madhya Marg, Chandigarh, CHANDIGARH/CHANDIGARH/160019)  
Phone: 0172 2602490, 2602496  
Fax: 0172 2610358  
E-Mail: info@bis.gov.in  
Web: www.bis.org.in, www.bisindia.nic.in

**BUREAU OF INDIAN STANDARDS**  
Attachment to License No. CML-963496

| CML No. | Name of the Licensee with the Factory Address   | Name of the Product  | Indian Standard No. |
|---------|---|--|---------------------|
| 9554246 | Mathur KRI Limited, Village Anagarth, Taluk Wazirpur, Arunthi Block, Road, Pincode : 147201 | Carbon steel cast bolts, nuts, washers and tubular nut-bolting for general structural purposes - Specification | IS 2830: 2012       |

Endorsement No. 12 Dated 14-Apr-2022

Whereas, the license was valid upto First June Two Thousand Twenty Two.  
Now, consequent upon renewal, the validity of the license given is schedule of the license dated 11-MAY-2022 has been extended from First June Two Thousand Twenty Two to Thirty First May Two Thousand Twenty Three.

And, whereas the renewal was deferred till 14-Apr-2022 and license was not allowed to use or apply the Standard Mark from 12-Jul-2017 to 14-Apr-2022.

Other terms and conditions of license remain same.

Branch Head (Chandigarh Branch Office)

Manoj Bhawan, 9 Bahadur Shah Zafar Marg, New Delhi 110002, 9 Bahadur Shah Zafar Marg, DELHI 110002  
Contact No: +91 11 23224131, 22233375 Fax: +91 11 23214062, 232 Email: info@bis.gov.in, 23239402

IS 2830:2012

**भारतीय मानक ब्यूरो**  
Bureau of Indian Standards  
The National Standards Body of India

For any other communication:  
Chandigarh Branch Office (Flat No. 4-A, Sector 27-B, Madhya Marg, Chandigarh, CHANDIGARH/CHANDIGARH/160019)  
Phone: 0172 2602490, 2602496  
Fax: 0172 2610358  
E-Mail: info@bis.gov.in  
Web: www.bis.org.in, www.bisindia.nic.in

**BUREAU OF INDIAN STANDARDS**  
Attachment to License No. CML-97007423

| CML No.  | Name of the Licensee with the Factory Address  | Name of the Product  | Indian Standard No. |
|----------|--|--|---------------------|
| 97007423 | MADHAN LONG LIMITED<br>VILLAGE: ARUNAGARH<br>ARUNTHI BLOCK, ROAD,<br>NEAR TOLL PLAZA,<br>CHANDIGARH - 147201 | Small Seed and Medium Tensile Seed<br>Peas and Broad Beans Seed<br>Cassava Root (Cassava) Root 1, 1000<br>Seed and Medium Tensile Seed Beans | IS 432:1982         |

Endorsement No. 5 Dated 18-Jun-2022

Whereas, the license was valid upto Twenty Fourth July Two Thousand Twenty Two.  
Now, consequent upon renewal, the validity of the license given is schedule of the license dated 22-JUL-2022 has been extended from Twenty Fourth July Two Thousand Twenty Two to Twenty Third July Two Thousand Twenty Three.

Other terms and conditions of license remain same.

Branch Head (Chandigarh Branch Office)

Manoj Bhawan, 9 Bahadur Shah Zafar Marg, New Delhi 110002, 9 Bahadur Shah Zafar Marg, DELHI 110002  
Contact No: +91 11 23224131, 22233375 Fax: +91 11 23214062, 232 Email: info@bis.gov.in, 23239402

IS 432:1982

**भारतीय मानक ब्यूरो**  
Bureau of Indian Standards  
The National Standards Body of India

For any other communication:  
Chandigarh Branch Office (Flat No. 4-A, Sector 27-B, Madhya Marg, Chandigarh, CHANDIGARH/CHANDIGARH/160019)  
Phone: 0172 2602490, 2602496  
Fax: 0172 2610358  
E-Mail: info@bis.gov.in  
Web: www.bis.org.in, www.bisindia.nic.in

**BUREAU OF INDIAN STANDARDS**  
Attachment to License No. CML-978097423

| CML No.   | Name of the Licensee with the Factory Address  | Name of the Product                          | Indian Standard No. |
|-----------|--|--|---------------------|
| 978097423 | MADHAN LONG LIMITED<br>VILLAGE: ARUNAGARH<br>ARUNTHI BLOCK, ROAD,<br>NEAR TOLL PLAZA,<br>CHANDIGARH - 147201 | Medium and high tensile engineering purposes | IS 7887:1992        |

Endorsement No. 4 Dated 15-Sep-2022

Whereas, the license was valid upto Twenty Eighth November Two Thousand Twenty Two.  
Now, consequent upon renewal, the validity of the license given is schedule of the license dated 27-NOV-2022 has been extended from Twenty Eighth November Two Thousand Twenty Two to Twenty Seventh November Two Thousand Twenty Three.

Other terms and conditions of license remain same.

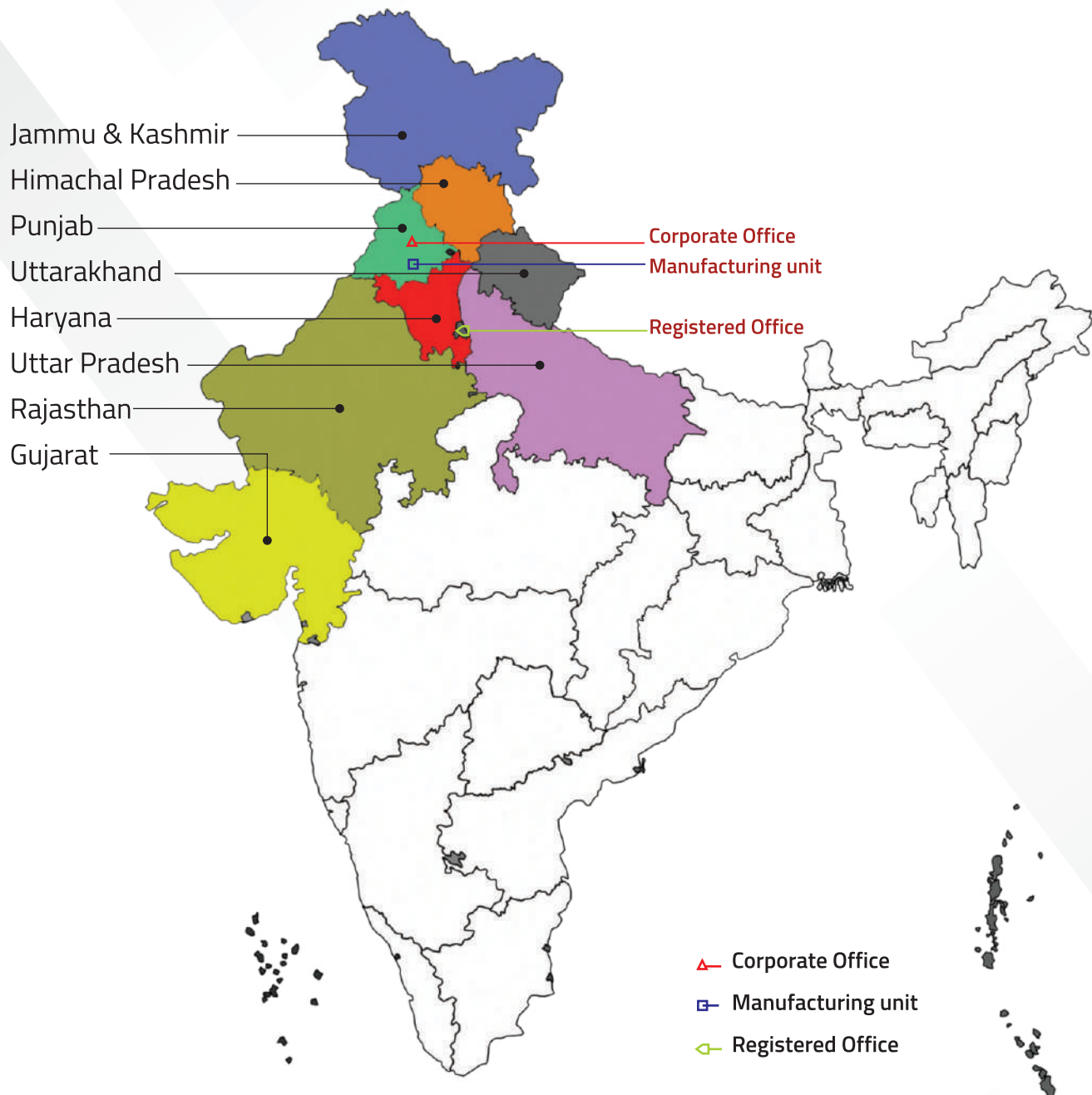
Branch Head (Chandigarh Branch Office)

Manoj Bhawan, 9 Bahadur Shah Zafar Marg, New Delhi 110002, 9 Bahadur Shah Zafar Marg, DELHI 110002  
Contact No: +91 11 23224131, 22233375 Fax: +91 11 23214062, 232 Email: info@bis.gov.in, 23239402

IS 7887:1992



## OUR GROWING NETWORK



Wide spread network of 1000+ dealers and 46 channel partners make '*Bharose ki Takat*' reach every corner of the country to provide consistent product support.

## BUILDING A SUSTAINABLE TOMORROW



### SUSTAINABLE FUTURE

By giving back more than what we took from Society, Environment and Country at large.

## JYOTI Shiksha Sankalp Educate to Prosper



शिक्षा – क्षेत्र में विद्यार्थियों को सम्मानित करने की दिशा में एक कदम



# OUR CLIENTS



and many more...

## Our Major Approvals



CPWD



PWD DELHI



MES WESTERN  
COMMAND



PWD JAMMU



INDUS TOWER



NDMC DELHI



BORDER ROAD  
ORGANISATION



POWER GRID  
CORPORATION  
OF INDIA LTD



TATA PROJECTS  
LIMITED



MECON LTD



ENGINEERING  
PROJECTS (INDIA) LTD



RAMBOLL



DEPARTMENT OF  
INDIAN SPACE  
RESEARCH  
ORGANISATION



DELHI METRO RAIL  
CORPORATION LIMITED



CONSTRUCTION INDUSTRY  
DEVELOPMENT COUNCIL



NOIDA METRO RAIL  
CORPORATION LIMITED



MSTC LIMITED



NATIONAL HIGHWAY  
AUTHORITY OF INDIA



**BUILDING A SUSTAINABLE  
TOMORROW**

## **Madhav KRG Limited**

**WORK OFFICE:** Vill. Akalgarh, Amlah-Bhadson Road, Near Toll Plaza, Dist Patiala – 147203

**REGISTERED OFFICE:** 1002-3 Agarwal Millennium Tower - 1, Netaji Subhash Palace, New Delhi – 110034

**CORPORATE OFFICE:** Level 1, Celebration Bazaar, GT Road, Khanna, Punjab – 141401

**[www.madhavkrggroup.com](http://www.madhavkrggroup.com) | +919779915000**