



#### CORPORATE OFFICE

1st Floor, The Celebration Bazaar, G.T. Road, Khanna, Punjab - 141401

#### WORKS

Village Akalgarh, Amlah-Bhadson Road, Dist. Patiala, Punjab - 147203

#### REGISTERED OFFICE

1002-3 Agarwal Millenium Tower, 1st Netaji Subhash Palace, New Delhi - 110034

#### CONTACT

Tel : +91-1765-282334

Email : info@madhavkrggroup.com

www.madhavkrggroup.com



HELPLINE NO. +91-9779915000

AN ISO 9001, OHSAS 14001,  
18001 COMPANY



IS 1239 (P.1):2004  
IS 1161:2014  
IS 4923:2017  
IS 3601:2006

Get in Touch  
With Us



**JYOTI**  
STEEL PIPES

**HAR PIPE MEIN  
BHAROSE KI TAAKAT**





## ABOUT MADHAV KRG GROUP

At Madhav KRG, a legacy of 20+ years meets a commitment to excellence, integrity, and sustainability. We aim to accelerate India's growth through Green Infrastructure, setting new benchmarks with innovation. **Rooted in our core values, we conduct our business with unwavering integrity—fair, honest, and transparent.**

**We consistently strive for excellence, pushing the boundaries of potential in every operation.** We are driven in our efforts to contribute to India's growth and progress. **Sustainability isn't just a goal; it's ingrained in every aspect of our business.** By implementing practices like water conservation and usage of renewable energy, we are shaping a greener future.



## OUR NETWORK OF TRUST

**2000+**  
employees



**10+**  
distribution networks  
across various states

**27+**  
years in the steel  
business



**1000+**  
dealers

**100000+**  
lives improved with  
our efforts



**15 lacs MT**  
annual production  
capacity of steel

**EXPERIENCE  
BHAROSE KI TAAKAT  
WITH JYOTI'S  
SUPERIOR  
STEEL SOLUTIONS**



**JYOTI, Madhav KRG's flagship brand, is your trusted partner for top-notch steel products.**

Our extensive range includes robust Pipe & Tube engineered for strength and durability, precision-crafted pipes, tubes, and versatile GP coils offering corrosion resistance and high tensile strength.

**JYOTI'S success is nurtured by a trusted network that fosters growth through strong alliances and relationships.**



# JYOTI PIPES & TUBES

Our products combine reliable materials with cutting-edge technology for versatile, customised pipes and tubes catering to multi-industrial applications. They are crafted for ambition. We have an annual capacity of 200,000 metric tonnes.

Our state-of-the-art plant, powered by technology from M/S Seuthe (Germany) and ThermoTool (USA), ensures industry-standard precision. We have two versatile brands for all your needs: Jyoti Ultima and Jyoti Pro.

Expect unmatched reliability, performance, and durability from our products. Trust in our expertise and choose Ultima and Pro for exceptional results.



## JYOTI STEEL PIPES: THE UNBEATABLE CHOICE

Jyoti Steel Pipes

Advantages

Other Steel Pipes



High load bearing capacity



Consistent dimensions



Versatile product range



High production capabilities



Reliable welded joints



Expert support



Assured quality



Aesthetic quality



Easy to paint



High Torsional Strength



Efficient material usage



Lowered project cost



Easy installation



Your Source  
of Trust,  
Pillar of  
Progress

## INTEGRATED QUALITY MANAGEMENT SYSTEM

Our Integrated Quality Management System (IQMS) ensures rigorous quality assurance throughout our manufacturing process. From sourcing raw materials to delivering the finished product, IQMS guarantees compliance with the highest standards. This advanced system guides us toward excellence, optimizing processes for efficiency and consistently exceeding customer expectations.



## ADVANCED PRODUCTION CAPABILITIES



At Madhav KRG, innovation and precision redefine steel pipe manufacturing standards. With an annual production capacity of 200,000 MT, our state-of-the-art plant positions us as an industry leader. Embracing groundbreaking technologies like Electricity Resistant Technology from Thermatool and Saw Cutting Machines from ERW Technology in Turkey, we uphold our commitment to innovation and reliability. Our in-house Research and Testing Facility ensure every Jyoti pipe meets stringent quality norms, reflecting our dedication to exceeding expectations. Through the consistent use of cutting-edge technology, trusted partnerships, and ongoing innovation, we reshape industry practices.



## BIS CERTIFICATIONS

Certified Excellence,  
Trusted  
by Industry  
Giants



IS 1239 : 2004



IS 1161 : 2014



IS 4923 : 2017



IS 3601 : 2006



IS 4270

## OUR APPROVALS



CPWD



PWD DELHI



MES WESTERN  
COMMAND



PWD JAMMU



INDUS TOWER



NDMC DELHI



BORDER ROAD  
ORGANISATION



POWER GRID  
CORPORATION  
OF INDIA LTD



TATA PROJECTS  
LIMITED



MECON LTD



ENGINEERING  
PROJECTS (INDIA) LTD

RAMBOLL

RAMBOLL



DEPARTMENT OF  
INDIAN SPACE  
RESEARCH  
ORGANISATION



DELHI METRO RAIL  
CORPORATION LIMITED



CONSTRUCTION INDUSTRY  
DEVELOPMENT COUNCIL



NOIDA METRO RAIL  
CORPORATION LIMITED



MSTC LIMITED



NATIONAL HIGHWAY  
AUTHORITY OF INDIA

# JYOTI ULTIMA

STEEL PIPES

Where Strength Meets Reliability

It is your dependable solution for all your application usage. Elevate your projects with steel pipes unmatched in strength that are ideal for delivery.

# JYOTI PRO

STEEL PIPES

Elevating Performance In Every Application

Introducing Jyoti Pro, with steel pipes that exceed expectations and define excellence. It's the choice for those who demand peak performance in every aspect.

### BEST SUITED FOR



SCAFFOLDING

AGRICULTURE

FABRICATION

### BEST SUITED FOR



AGRICULTURE

FABRICATION

SCAFFOLDING

SOLAR PLANT

FIRE SAFETY

PARAMETERS	PIPE & TUBES (ROUND)	RECTANGULAR HOLLOW SECTIONS	SQUARE HOLLOW SECTIONS	
	Finishing Operations	1. Pipe & Tube Ends 2. Cut Length	1. Pipe & Tube Ends 2. Cut Length	Black (Self Coloured/ Uncoated)
Surface Protection	1. Black (Self Coloured/ Uncoated) 2. Outside Protection Coating/Oiling/Varnis	Black (Self Coloured/ Uncoated)		
Plant Technology	1. High Speed Mill 2. Turkey & German based Technology	1. High Speed Mill 2. Turkey & German based Technology		
Size Range	OD-18.1mm to 193.7mm	RHS:40x20mm to 200x100mm, SHS:15x15mm to 150x150mm		
Thickness Range	1.20mm to 6.00mm	1.20mm to 6.00mm		
Bundle Weight	1MT to 3 MT	1MT to 3 MT		
Length	4 Meter to 12 Meter	4 Meter to 12 Meter		
Chemical Properties	C-0.10% Max. M- 0.40% Min. P-0.04% Max. S-0.140% Max.	C-0.10% Max. P-0.04% Max. M-0.40% Min. S-0.040% Max.		
Mechanical Properties	<b>Steel tubes for structural purposes</b>		<b>Hollow Steel Sections for structural uses</b>	
	Grades	YS (Min) TS (Min) Elongation (Min)	Grades	YS (Min) TS (Min) Elongation (Min)
	YST-210	210 MPa 330 MPa 20% & 12% (< 25 mm NB)	YST210	210 MPa 330 MPa 20% & 12% (<25mm NB)
	YST-240	240 MPa 410 MPa 17% & 12% (< 5 mm NB)	YST-240	240 MPa 410 MPa 15% & 10% (<25mm NB)
	YST-310	310 MPa 450 MPa 14% & 12% (< 25 mm NB)	YST-310	310 MPa 450 MPa 10% & 8% (<25mm NB)
YST-355	355 MPa 490 MPa 10% & 12% (< 25 mm NB)	YST-355	355 MPa 490 MPa	
Thickness Tolerance	<b>Steel Tubes, Tubular and other Wrought Steel Fittings</b>			
	Class	TS (Min) Elongation (Min)		
	L.M.H	320 MPa 20% & 12% (< 25 mm NB)		
Length Tolerance	Light Series:- +5% -4%		For all Sizes - 35%	
	Medium & heavy series:- 35%		35mm	



## JYOTI Steel Pipes in Various Sectors

### # SCAFFOLDING

JYOTI Steel Pipes with its competitive product range for construction & building material industry manufacturing robust straight pipes needed for the Scaffolding Structures.

### # FABRICATION

JYOTI Steel Pipes offer ISI-stamped pipes suitable for diverse applications, including domestic and commercial usage and for government and private projects. These pipes meet varied fabrication requirements, ensuring that all ideas come to life. It provides a clean finish for support frames, roofing, fencing, gates, roof trusses, columns, beams and handrails.





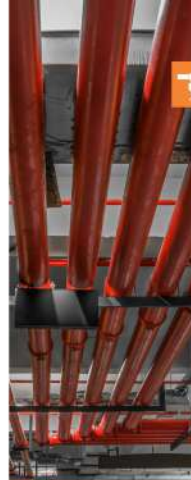
## AGRICULTURE

JYOTI Steel Pipes play a crucial role in the agricultural sector, providing a trustworthy and cost-effective solution for farming equipment manufacturers such as combines, seeding machines, and tractor parts. These pipes cater to agricultural machinery manufacturers, ensuring precision and meeting stringent quality criteria.



## FIRE SAFETY

JYOTI Steel Pipes are the go-to choice for industries seeking top-notch firefighting systems. These pipes offer robust solutions crafted with medium and heavy-grade pipes, ensuring compliance with stringent specifications and upholding high-quality standards.



## SOLAR INDUSTRY

JYOTI Steel Pipes find their application in the solar industry, particularly in manufacturing structures for mounting solar panels. Crafted for durability, these pipes are engineered to resist corrosion and rust, ensuring an extended lifespan. Additionally, designed for resilience, they offer high tensile strength and long-term durability, optimising their functionality in solar panel mounting structures.



## OTHERS

JYOTI Steel's versatility extends across diverse industries. In the telecom industry, **JYOTI Steel Pipes** provides reliable infrastructure for communication networks and is chosen for telecom and fencing, offering robust solutions, while ideal for automotive, telecom, and sports, demonstrates versatility and durability in diverse applications. JYOTI Steel finds its application, especially in the telecom and automotive industries. **JYOTI Steel Pipes** is used for truck side walls, versatile, crafting components like roof trusses, columns, and beams for tractors and buses. We recommend **JYOTI Steel Pipes** for all structural applications.



## CIRCULAR HOLLOW SECTION & ROUND PIPES

### STEEL PIPES FOR STRUCTURAL PURPOSES

NOMINAL SIZE NB		CONFORMING TO IS - 1181-2014		NOMINAL WEIGHT BLACK TUBES PLAIN END		
mm	INCH	OUTSIDE DIAMETER	THICKNESS T	kg/m	LB/FT	
15	(1/2")	21.30	2.00	14	0.947	0.56
			2.60	12	1.293	0.80
			3.20	10	1.440	0.94
20	(3/4")	26.90	2.50	12	1.580	0.98
			3.20	10	1.800	1.15
			3.50	12	1.980	1.25
25	(1")	33.70	3.00	10	2.400	1.50
			4.00	8	2.950	1.85
			4.50	12	3.540	2.20
32	(1 1/4")	42.40	3.20	10	3.100	1.94
			4.00	8	3.380	2.10
			4.50	12	3.750	2.35
40	(1 1/2")	48.30	3.20	10	3.560	2.20
			4.00	8	4.350	2.70
			4.50	12	4.980	3.10
50	(2")	60.30	3.50	8	5.030	3.15
			4.50	7	5.790	3.60
			5.00	10	6.420	4.00
63	(2 1/2")	76.20	4.50	7	7.850	4.90
			5.00	10	8.700	5.40
			5.50	8	9.360	5.85
80	(3")	88.90	4.80	6	9.960	6.20
			5.50	7	11.200	7.00
			6.00	5	12.200	7.60
100	(4")	114.30	5.00	5	14.500	9.00
			6.00	4	16.300	10.15
			6.50	3	17.300	10.70
119	(4 3/4")	127.00	5.50	4	16.500	10.30
			6.50	3	18.400	11.45
			7.00	2	19.400	12.00
139	(5 1/2")	146.00	6.00	3	17.500	10.90
			7.00	2	19.400	12.00
			7.50	1	20.400	12.55
159	(6 1/4")	165.10	6.50	2	18.500	11.45
			7.50	1	20.400	12.55
			8.00	1	21.400	13.10
178	(7")	183.20	7.00	1	19.500	12.00
			8.00	1	21.400	13.10
			8.50	1	22.400	13.65

#### CHEMICAL PROPERTIES

C	0.25MAX
MN	1.75MAX
P	0.025MAX
S	0.035MAX

#### PHYSICAL PROPERTIES & TOLERANCES

Grade	YS	TS	Elong
	(Min.)	(Min.)	(Min.)
	Mpa	Mpa	Elong

YST-210	210	330	20
YST-240	240	410	17
YST-310	310	450	14

Note: For tubes upto size 25mm NB including Elongation of 12% shall be permissible.

#### WEIGHT

Single tubes (light series)	±0%
Single tubes (medium & heavy series)	+/- 10%

#### WEIGHT TRUCK LOAD

For lot of 10 Ton Min	
Light series	+/- 5%
Medium & heavy series	+/- 7.5%

#### TOLERANCE

Outside diameter	
Tubs and excluding 48.3mm	+0.4mm
	-0.8mm
Over 48.3mm	+/- 1%

#### THICKNESS

± Not Limited	±0%
---------------	-----

#### SPECIAL OUTER DIA (OD) SIZE RANGE

Size	Thickness Range
25.4 OD	1.2 mm - 3 mm
31.75 OD	1.2 mm - 3.5 mm
38.1 OD	1.2 mm - 4 mm
50.8 OD	1.4 mm - 4.5 mm
63.5 OD	1.4 mm - 4.5 mm
127 OD	2 mm - 6 mm



## SQUARE HOLLOW SECTION

### HOLLOW STEEL SECTIONS FOR STRUCTURAL USE SQUARE HOLLOW SECTION (SHS)

CONFORMING TO IS - 4923-1997			
SHS	THICKNESS	UNIT WEIGHT	
mm	mm	kg/meter	lb/ft
15 X 15	1.20	0.55	18.00
	1.60	0.68	19.55
	2.00	0.84	19.90
20 X 20	2.00	0.99	10.10
	2.40	1.20	8.55
	2.90	1.50	7.64
25 X 25	2.00	1.36	7.25
	2.60	1.69	5.90
	3.20	1.98	5.05
32 X 32	2.60	2.26	4.42
	3.20	2.69	3.72
	4.00	3.19	3.13
38 X 38	2.00	2.38	4.59
	2.60	2.75	3.64
	3.20	3.29	3.04
40 X 40	4.00	3.95	2.51
	2.00	2.31	4.33
	2.60	2.92	3.42
50 X 50	3.20	3.49	2.87
	4.00	4.20	2.58
	2.60	3.69	2.71
60 X 60	3.20	4.46	2.25
	4.50	5.95	1.68
	2.60	4.55	2.20
72 X 72	3.20	5.90	1.92
	4.35	5.96	1.68
	4.50	7.43	1.35
72 X 72	3.20	6.71	1.49
	4.00	8.22	1.22
	5.00	10.01	1.00

CONFORMING TO IS - 4923-1997			
SHS	THICKNESS	UNIT WEIGHT	
mm	mm	kg/meter	lb/ft
80 X 80	3.20	7.51	1.55
	4.00	5.22	1.08
	5.00	11.27	0.89
95 X 95	3.60	9.67	1.05
	4.50	11.88	1.14
	5.40	14.01	1.21
100 X 100	3.60	10.64	1.14
	4.50	13.08	1.26
	6.00	16.98	1.59
113.5 X 113.5	4.00	13.43	1.34
	5.00	16.55	1.60
	6.00	19.53	1.81
125 X 125	4.00	14.87	1.67
	5.00	16.55	1.85
	6.00	21.69	2.46
132 X 132	4.00	15.75	1.65
	5.00	19.45	1.91
	6.00	23.05	2.45
150 X 150	5.00	22.26	2.45
	6.00	26.40	2.98

#### OTHERS ALLOWABLE STRESS VALUES (IN MPA)

YST-210	210	330
YST-240	240	410
YST-310	310	450

Note: Min. % Elongation: 10% for Gr. Yst-310, 15% for Gr. Yst-240 & 20% for Yst-210. The sizes which are not covered in the table can also be supplied as per customer requirement (Clause- 9.3)



## RECTANGULAR HOLLOW STEEL SECTION

HOLLOW STEEL SECTIONS FOR STRUCTURAL USE RECTANGULAR HOLLOW SECTION (RHS)

### CONFORMING TO IS : 4923-1997

RHS	THICKNESS	UNIT WEIGHT
MM	MM	KG/METER
40 X 20	2.00	1.65
	2.60	2.10
	3.20	2.49
40 X 25	1.60	1.57
	2.00	1.94
	2.80	2.23
50 X 25	2.00	2.18
	2.60	2.71
	3.20	3.24
50 X 35	2.00	2.41
	2.80	2.98
	3.60	3.43
60 X 40	2.60	3.74
	3.20	4.50
	4.00	5.02
60 X 50	2.60	3.69
	3.20	4.65
	4.00	5.15
75 X 25	2.00	1.73
	2.60	2.22
	3.20	2.55
80 X 40	2.80	3.03
	3.50	3.59
	4.30	4.23
80 X 60	3.00	3.50
	3.80	4.11
	4.60	4.55
90 X 45	3.20	3.71
	4.00	4.55
	5.00	5.27
100 X 50	3.20	3.71
	4.00	4.55
	5.00	5.27
122 X 51	4.00	5.22
	5.00	6.01

### CONFORMING TO IS : 4923-1997

RHS	THICKNESS	UNIT WEIGHT
MM	MM	KG/METER
145 X 82	3.60	12.16
	4.50	14.99
	5.40	17.74
150 X 75	3.60	12.05
	4.50	14.85
	5.40	17.57
150 X 100	2.00	2.30
	2.60	2.92
	3.20	3.50
200 X 100	2.00	2.30
	2.60	2.92
	3.20	3.50

### GENERAL TECHNICAL SPECIFICATION AND TOLERANCES

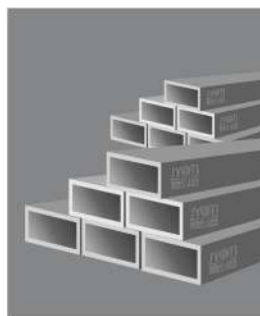
Size:	IS 4923-1997
Length:	6000 & 9000mm customized length ranging from 4 mtrs. to 8 mtrs. may be supplied.
Thickness:	For all sizes +/- 10.0%
Outer Dimension:	As with a Min. of 0.5mm
Corner Radii:	Max. 3x (Thickness of the section)
Height:	of individual length +/-0.5% (in parts of 10 MT +/- 15%)
Straightness:	Min 1000th of any length measured along the centre line in the straight condition unless otherwise specifically intimated.
Tolerances:	Max. 2mm/2.00mm/1mm length, 3mm measured relative vertical shift of any adjacent corner of the measured by placing one side on flat surface.
End Finish:	Hot Ended: Mechanically finished mill-cut finish without further machining.
Surface Finish:	Black without any surface treatment of oiling or rusting.
Base Material:	Surface content: 0.02% max Phosphorus, 0.05% max

### CONFORMING TO IS : 4276-2001

BORE (RHS)	OUTSIDE DIAMETER	WALL THICKNESS	NOMINAL WEIGHT
MM	MM	MM	KG/M
100	114.3	5	15.45
125	141.3	5	24.8
150	168.3	5	34.15
175	195.3	5.6	43.40

### PHYSICAL PROPERTIES CONFORMING TO IS : 4276-2001

Grade	Y <sub>s</sub> (min)	T <sub>s</sub> (min)
	MPa	MPa
	(kg/cm <sup>2</sup> )	(kg/cm <sup>2</sup> )
Fe 410	355	485
Fe 430	375	505



## SPECIFICATIONS OF PRE GALVANISED PIPES (PGP)

Zinc Coating 120 GSM - 300 gsm

### Round hollow section size range

Section (CHS)	21.20mm OD - 165.40m OD
Thickness	1.0 mm - 3.50 mm
Length	4.0 meter - 12.0 meter

### Rectangular hollow section size range

Section (RHS)	30mm x 20mm - 200mm x 100mm
Thickness	1.0mm - 6.0mm
Length	4.0meter - 12.0meter

### Square hollow section size range

Section (SHS)	15mm x 15mm - 150 mm x 150 mm
Thickness	1.0mm - 6.0mm
Length	4.0meter - 12.0meter

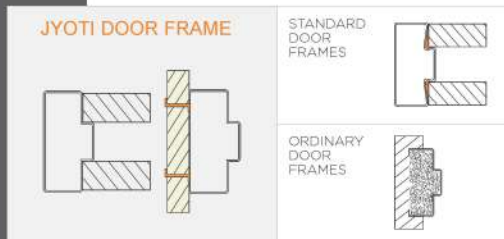


## WIDE RANGE OF DOOR AND WINDOW FRAMES

JYOTI, a well-established name in the Steel Industry, now adds another product in their portfolio- JYOTI Door Frames.

The chief advantage of Steel Door frames is the immense cost savings along with ease of Installation.

These door frames are manufactured with top quality of Steel in a variety of thicknesses. JYOTI door frames ensure a glittering finish and performance that lasts. All this makes JYOTI door frames the perfect selection.



## OUR CLIENTS



and many more...

# JYOTI SHIKSHA SANKALP

## Educate to Prosper



When it comes to knowledge, we celebrate more than just academic achievements; we celebrate the promising potential of a brighter future.

JYOTI Shiksha Sankalp, believes in nurturing minds, igniting dreams, and empowering future leaders.

We take immense pride in honouring our exceptional scholars who have excelled in their studies and have become an inspiration for others. To the top three performers of final exams, we extend gifts that mirror the brilliance of their achievements.

Over 1000 students have been celebrated for their dedication, hard work, and extraordinary performance.

Here's to the scholars, the achievers, and the leaders of tomorrow!

